

Tsada Heights

Contemporary Luxury with a View



the location





An agricultural vineyard village, Tsada is situated on the mountain overlooking Pafos Town at 628m above sea level. With dramatic views across Pafos to the Mediterranean Sea, **Tsada** is a quiet village by day developing into a lively, friendly, bustling centre in the late afternoon and evening.



The picturesque centre of the village is found through a maze of twisting narrow roads and is dominated by the impressive Greek Orthodox Church. Incorporating a taverna, bank, supermarket, coffee shops, the village is self sufficient and a daily bus service from the village to Pafos market offers an alternative if required.

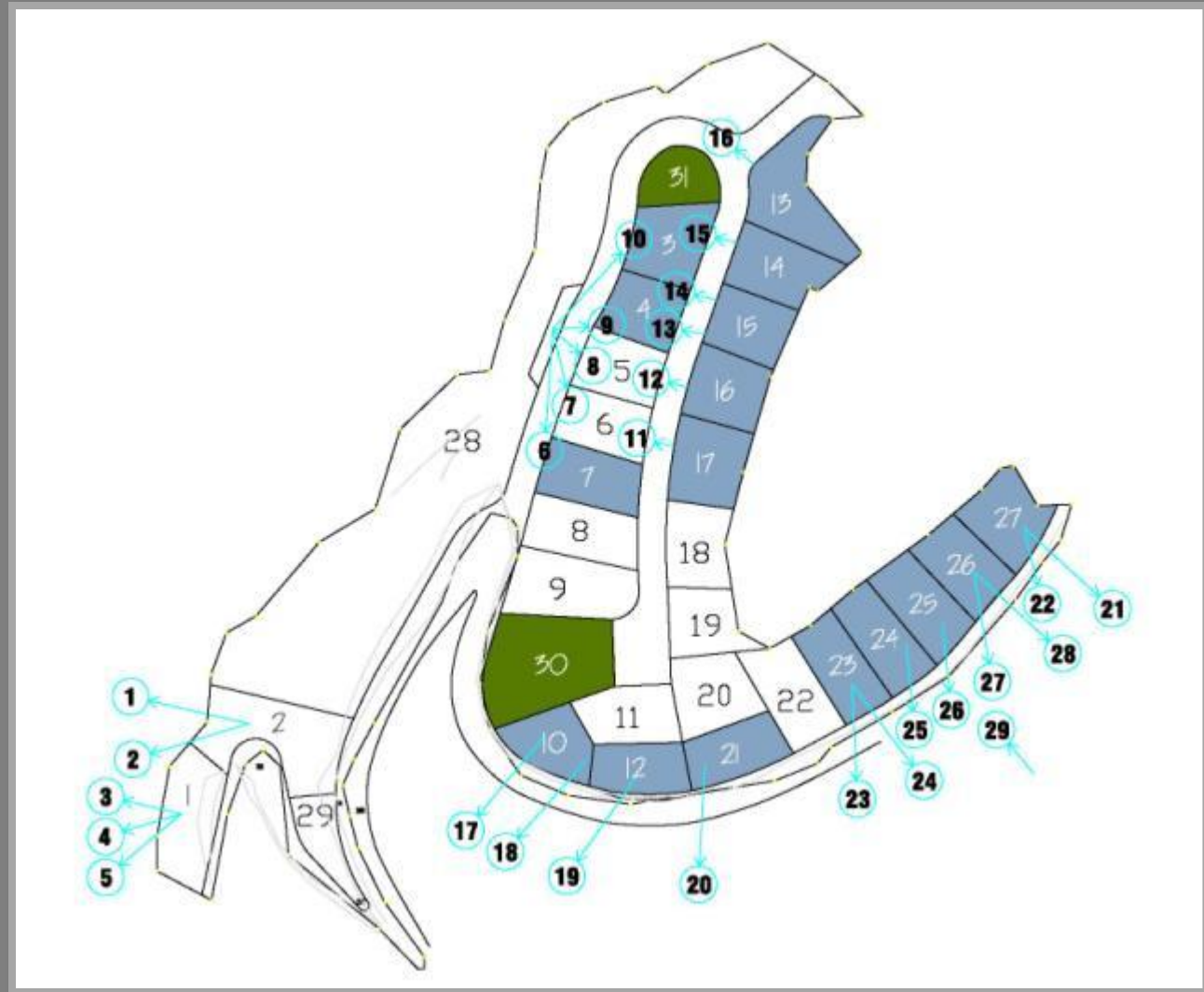


the plots



Tsada Heights can offer a potential resident large plots with spectacular views on which to build a custom design villa.

Alternatively conceptual villas carefully designed to maximize the potential of each plot are available for consideration.





Some unique luxury villas have been individually designed to further enhance the natural assets of each plot.



Majestically situated on the hilltop overlooking Pafos, the luxury villas at **Tsada Heights** command spectacular panoramic views of Pafos town and coastline.

This coveted location offers the very best views in the Pafos region stretching across the town and sea to the horizon by day and a bejewelled spectacular scene at night.





Extensive use of glass in the villa designs gives dramatic effect to stunning views making Tsada Heights an enviable residence.



Every villa boasts extensive private gardens and private pool and some properties are fortunate to occupy a double plot.





Careful consideration has been paid to ensuring that each villa maximises both views and privacy and therefore guaranteeing potential residents have the best possible combination.



the quality

The quality finish on each and every villa will be at the discretion of the individual client.

Our customer technical support team will be on hand throughout the design process to offer expert advice.

For any predesigned villas a suggested high standard finish is available.



the lifestyle





Look down on the hustle and bustle from a tranquil, elevated position.



Although grandly seated on the hilltop, Tsada Heights has quick and easy access to Pafos town and Harbour.

Alternatively, a countryside drive of under 5 minutes will bring you to the recently renovated 18 hole golf resort of Minthis Hills.



A short drive of 10 minutes is all it takes to arrive at a new exclusive spa catering for pure self indulgence in a green and verdant valley.



New Pafos – Polis Highway (A7) spanning 31 km starts construction now and will be completed within 36 months reducing the journey time to Polis to 15 minutes.



Thank you

The information in this presentation is for guidance only and does not constitute a contract and/or offer or any part thereof, or warranty. Images and descriptive representations may not necessarily be accurate in every respect. Dimensions are indicative and not intended for use for sizes of appliances or items of furniture.

E & O E. © Copyright. Pafilia Property Developers LTD 2010.